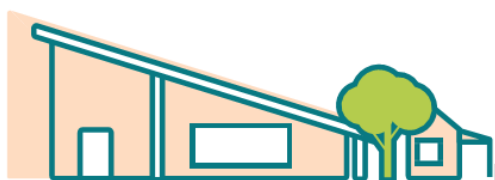




HENDON PRIMARY SCHOOL



2024 annual report to the Community

Hendon Primary School and Hendon Preschool

Hendon Primary School number: 670

Hendon Preschool number: 1585

Partnership: Western Adelaide Shores



School principal:

Reece Campbell

Signature

Date of endorsement:

29/04/2025



Government
of South Australia
Department for Education

Context Statement

Hendon Primary School caters for students from R-6. At the time of this report, the enrolment in 2024 is 293. Hendon Primary School is classified as Category 3 on the Department for Education Index of Educational Disadvantage. At the time of this report, the school population includes 13% Aboriginal students, 11% students with disabilities, 12% students with English as an additional language or dialect (EALD) funded background, 3% children/young people in care. Further information about the school is available on the school's website (including its context statement), as well as the My School website.

Information about Hendon Preschool is available on the centres website, as well as the Australian Children's Education and Care Quality Authority (ACECQA) website.

Data Source: Department for Education data holdings from Mid census captured in AUGUST 2024.

Governing Council Report

2024 was a remarkable year at Hendon Primary School. The Governing Council, in collaboration with the Principal, laid the groundwork for long-term school improvement. We introduced several key strategies, including commencing Positive Behaviour for Learning, Zones of Regulation, Explicit Direct Instruction, and InitialLit literacy for our Junior Primary grades.

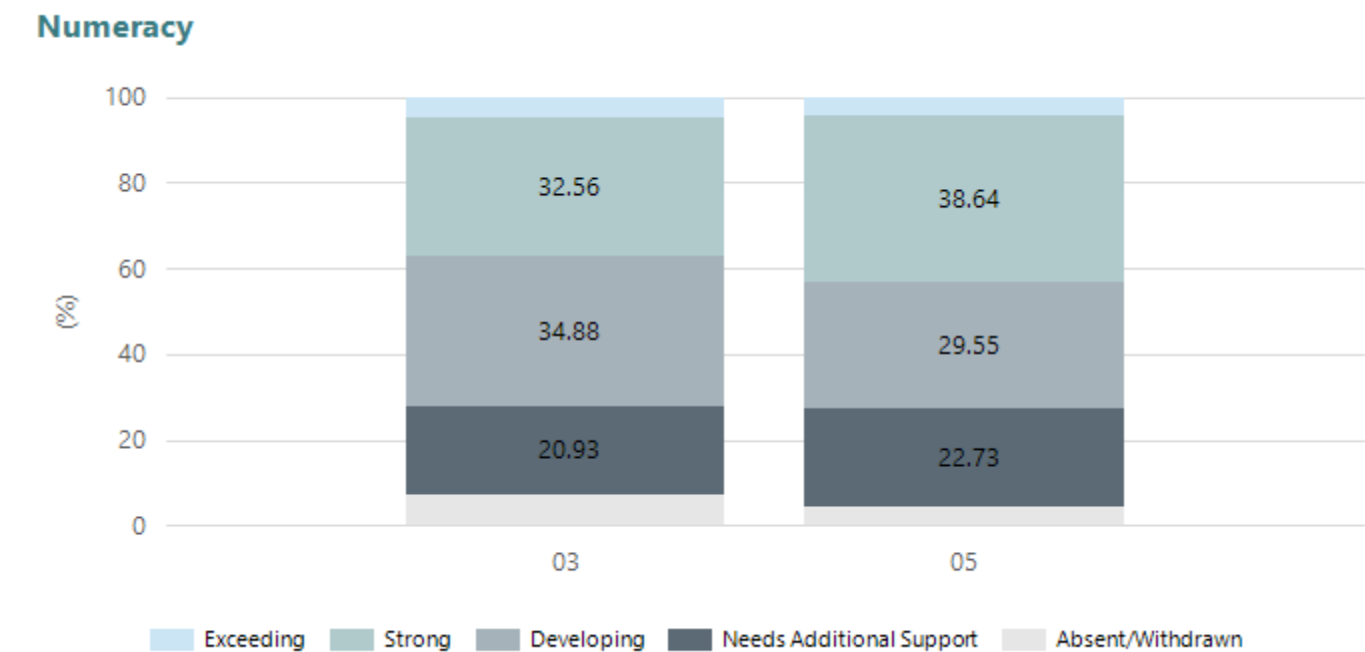
Throughout the year, we hosted a variety of special events, blending cherished traditions with exciting new activities. In Term 1, we celebrated our second Colour Spectacular, a vibrant and engaging event filled with coloured powder and slime, which fostered a positive community spirit. Additionally, our Bike Ed program significantly enhanced student safety awareness for riding to school. The 'My Tree Project' provided a wonderful opportunity for students to engage in practical learning about sustainability and environmental stewardship.

We continue to integrate Berry Street trauma-informed strategies to best support our students. These strategies have been incorporated into Governing Council meetings, with each meeting beginning with a 'Circle' routine.

Performance Summary

NAPLAN Proficiency

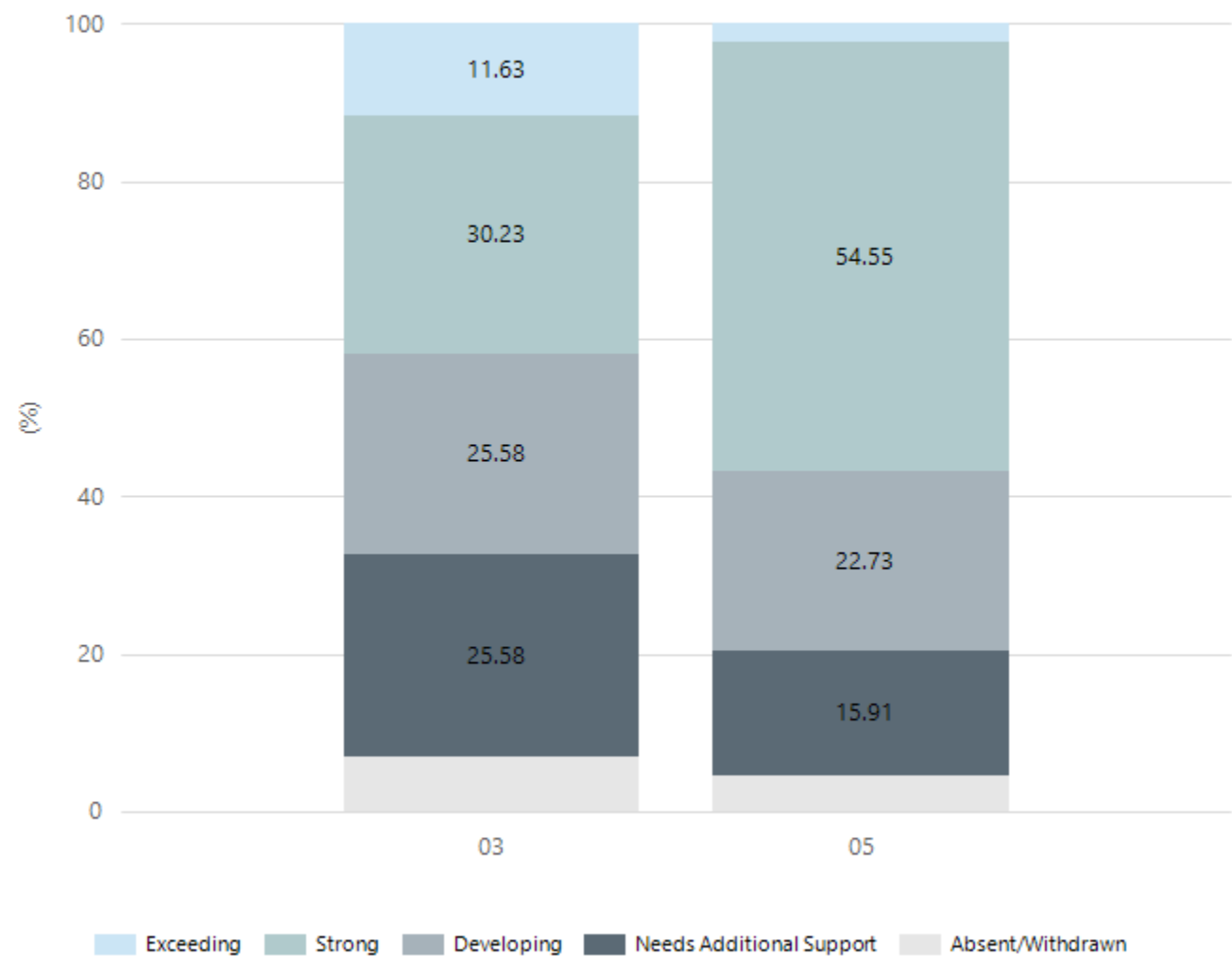
In 2023 the Australian Curriculum, Assessment and Reporting Authority (ACARA) - a Commonwealth Independent statutory authority - announced changes to NAPLAN performance reporting. The new approach replaces the previous numerical NAPLAN bands and the national minimum standard.



Year Level	03	05
Exceeding	2	2
Strong	14	17
Developing	15	13
Needs Additional Support	9	10
Absent/Withdrawn	3	2
Total	43	44

Data Source: Department for Education Assessment Data Holdings, 2024. If there are less than 6 students who sat NAPLAN in a school, no information will be shown. If a year level has less than 6 students, that year level will not be shown in NAPLAN results.

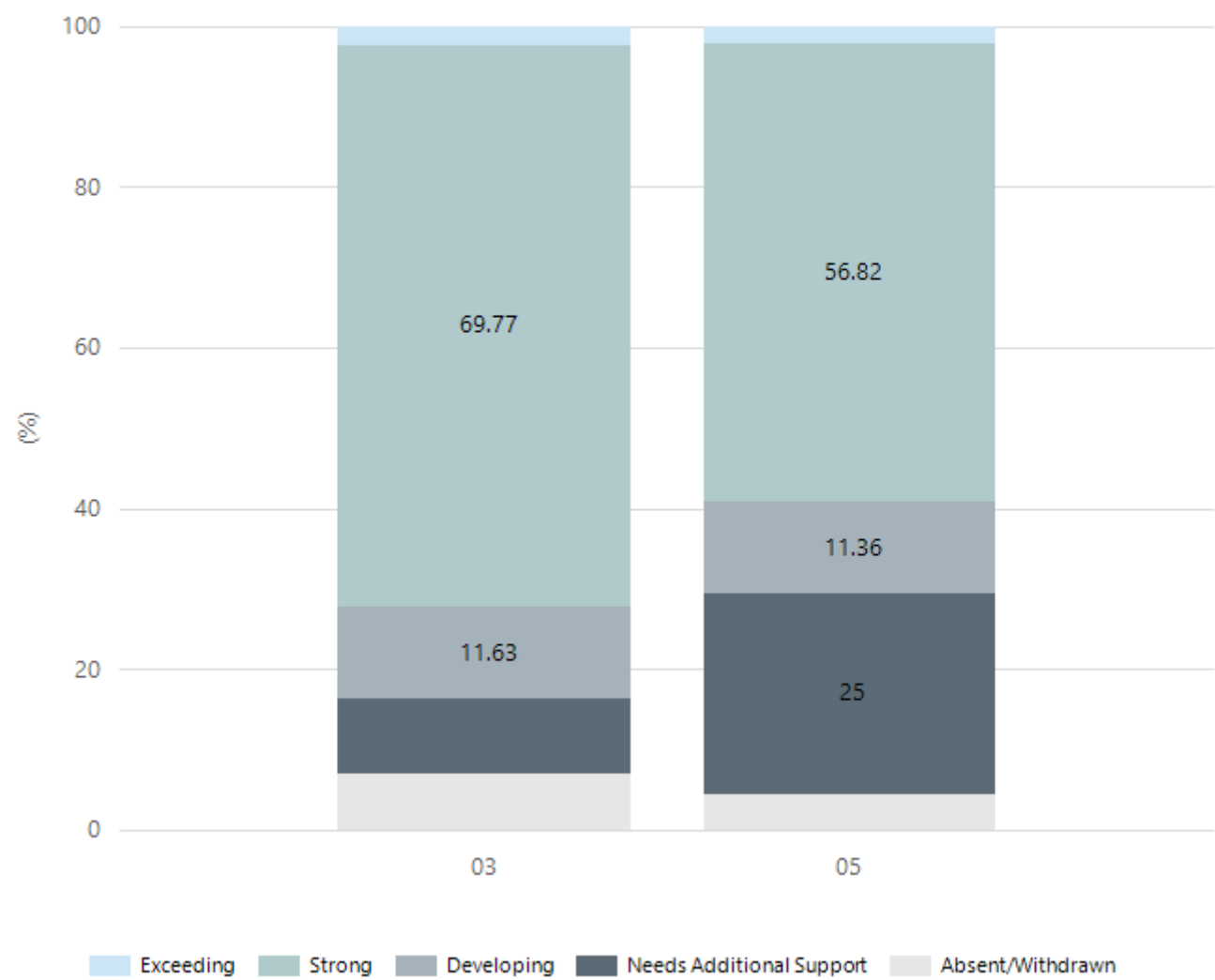
Reading



Year Level	03	05
Exceeding	5	1
Strong	13	24
Developing	11	10
Needs Additional Support	11	7
Absent/Withdrawn	3	2
Total	43	44

Data Source: Department for Education Assessment Data Holdings, 2024. If there are less than 6 students who sat NAPLAN in a school, no information will be shown. If a year level has less than 6 students, that year level will not be shown in NAPLAN results.

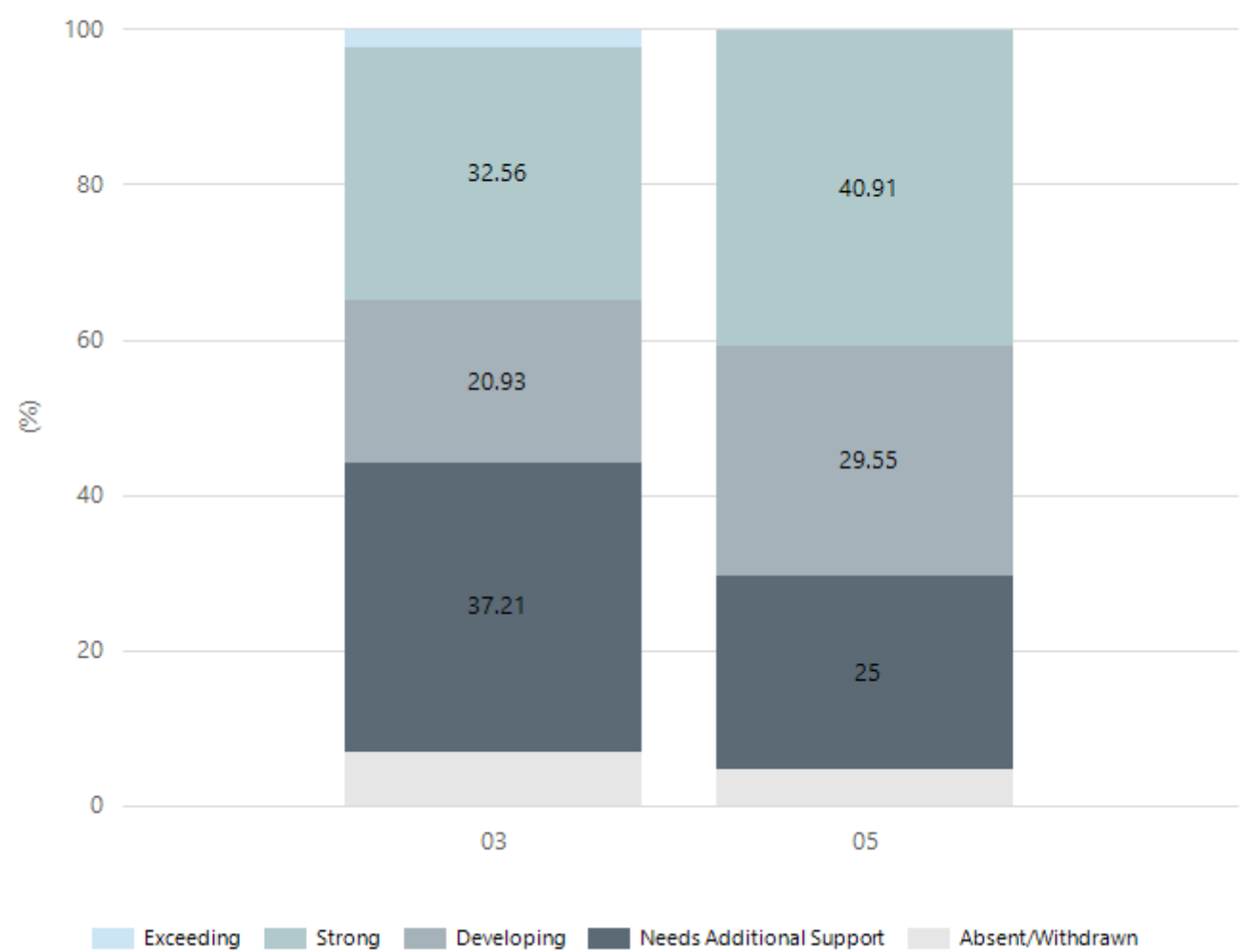
Writing



Year Level	03	05
Exceeding	1	1
Strong	30	25
Developing	5	5
Needs Additional Support	4	11
Absent/Withdrawn	3	2
Total	43	44

Data Source: Department for Education Assessment Data Holdings, 2024. If there are less than 6 students who sat NAPLAN in a school, no information will be shown. If a year level has less than 6 students, that year level will not be shown in NAPLAN results.

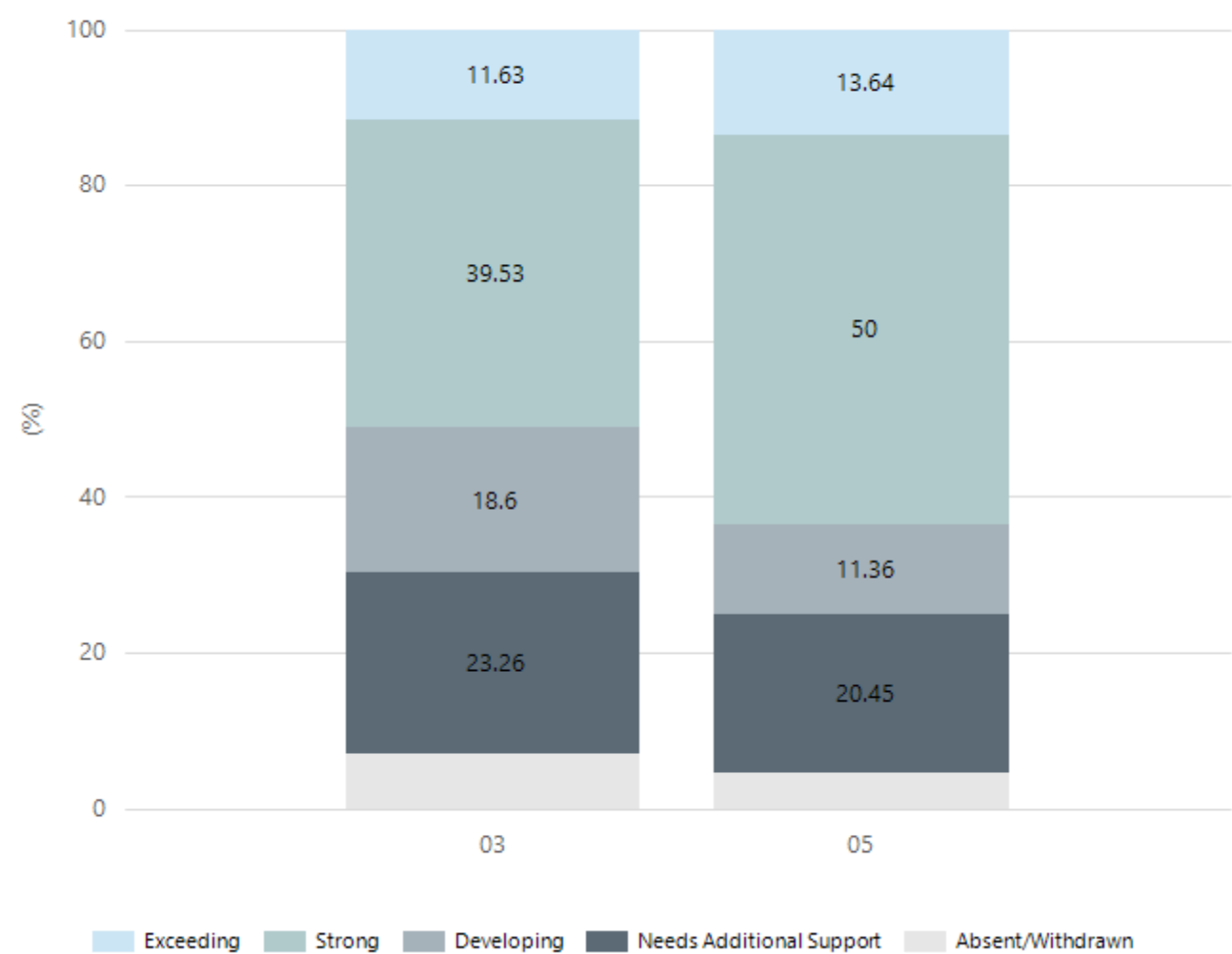
Grammar



Year Level	03	05
Exceeding	1	
Strong	14	18
Developing	9	13
Needs Additional Support	16	11
Absent/Withdrawn	3	2
Total	43	44

Data Source: Department for Education Assessment Data Holdings, 2024. If there are less than 6 students who sat NAPLAN in a school, no information will be shown. If a year level has less than 6 students, that year level will not be shown in NAPLAN results.

Spelling

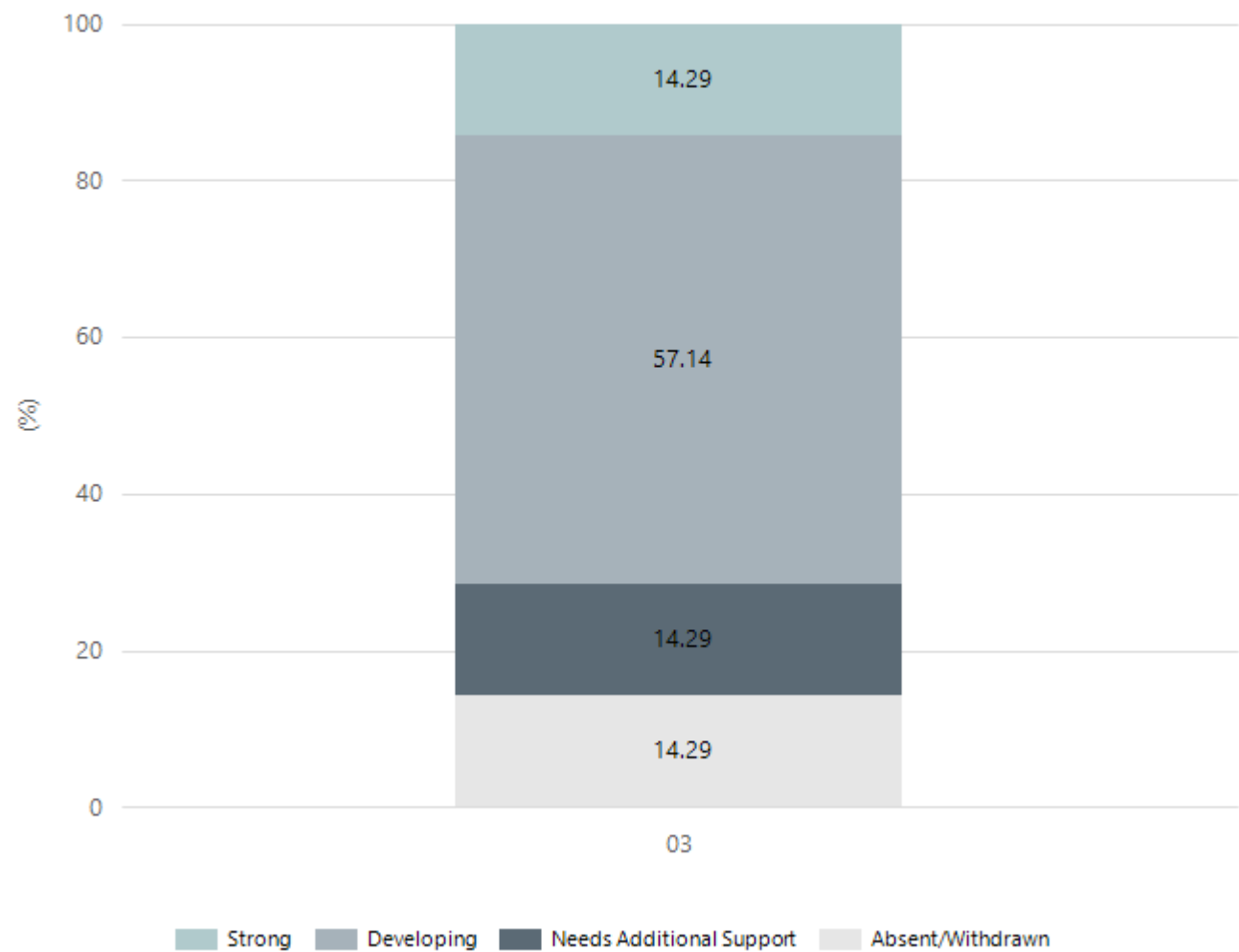


Year Level	03	05
Exceeding	5	6
Strong	17	22
Developing	8	5
Needs Additional Support	10	9
Absent/Withdrawn	3	2
Total	43	44

Data Source: Department for Education Assessment Data Holdings, 2024. If there are less than 6 students who sat NAPLAN in a school, no information will be shown. If a year level has less than 6 students, that year level will not be shown in NAPLAN results.

NAPLAN Proficiency - Aboriginal Learners

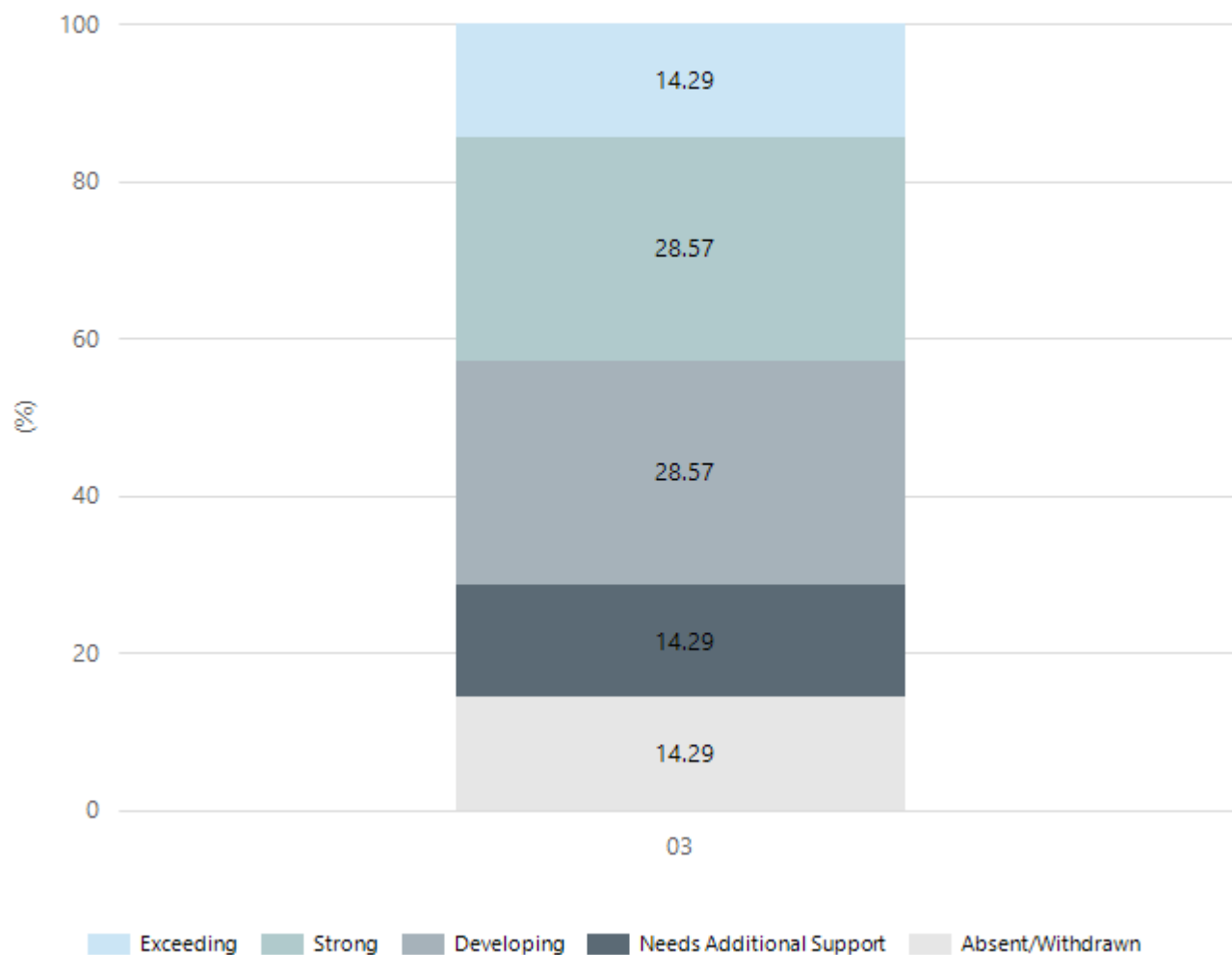
Numeracy



Year Level	03
Strong	1
Developing	4
Needs Additional Support	1
Absent/Withdrawn	1
Total	7

Data Source: Department for Education Assessment Data Holdings, 2024. If there are less than 6 students who sat NAPLAN in a school, no information will be shown. If a year level has less than 6 students, that year level will not be shown in NAPLAN results. Only data for Aboriginal learners is displayed.

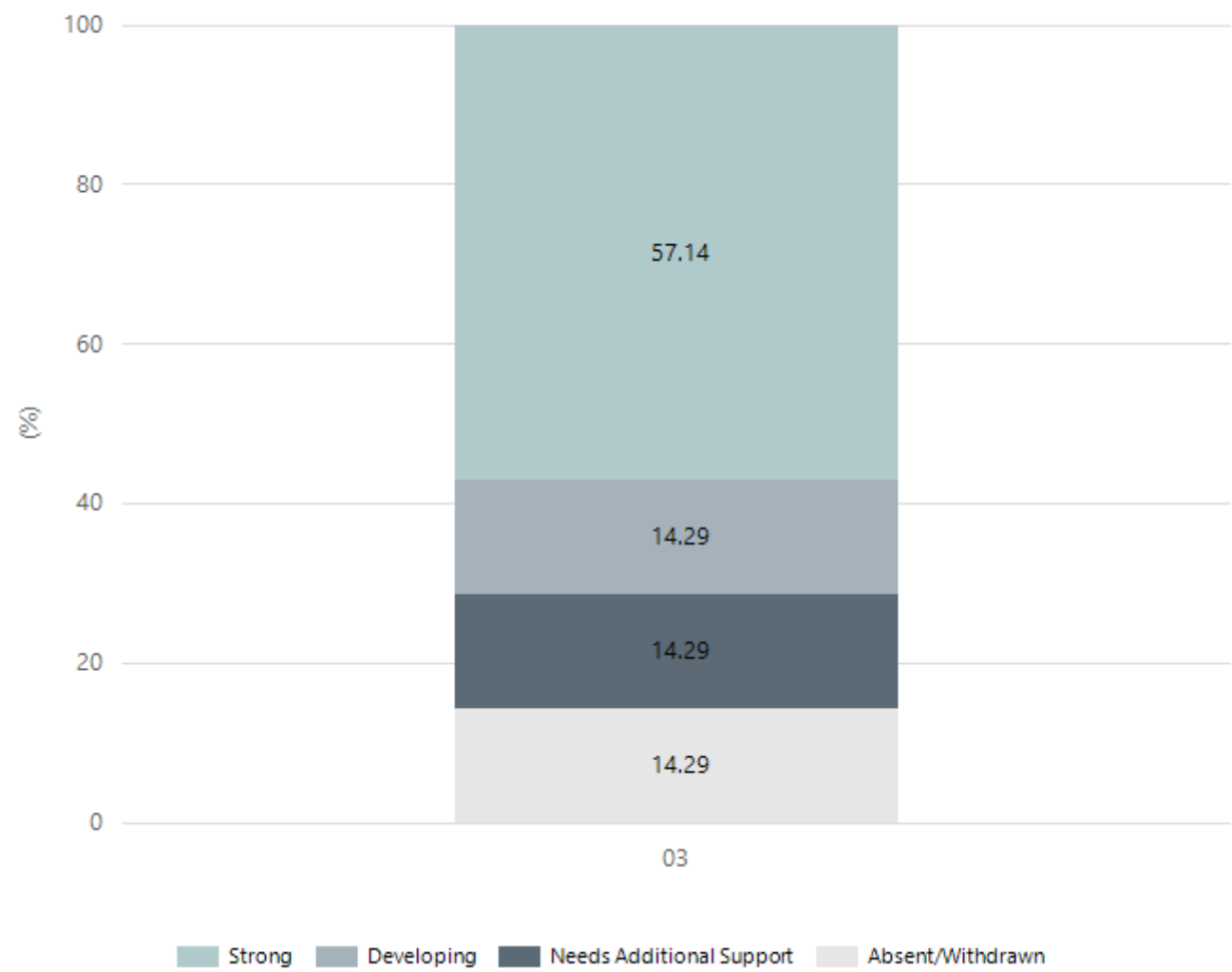
Reading



Year Level	03
Exceeding	1
Strong	2
Developing	2
Needs Additional Support	1
Absent/Withdrawn	1
Total	7

Data Source: Department for Education Assessment Data Holdings, 2024. If there are less than 6 students who sat NAPLAN in a school, no information will be shown. If a year level has less than 6 students, that year level will not be shown in NAPLAN results. Only data for Aboriginal learners is displayed.

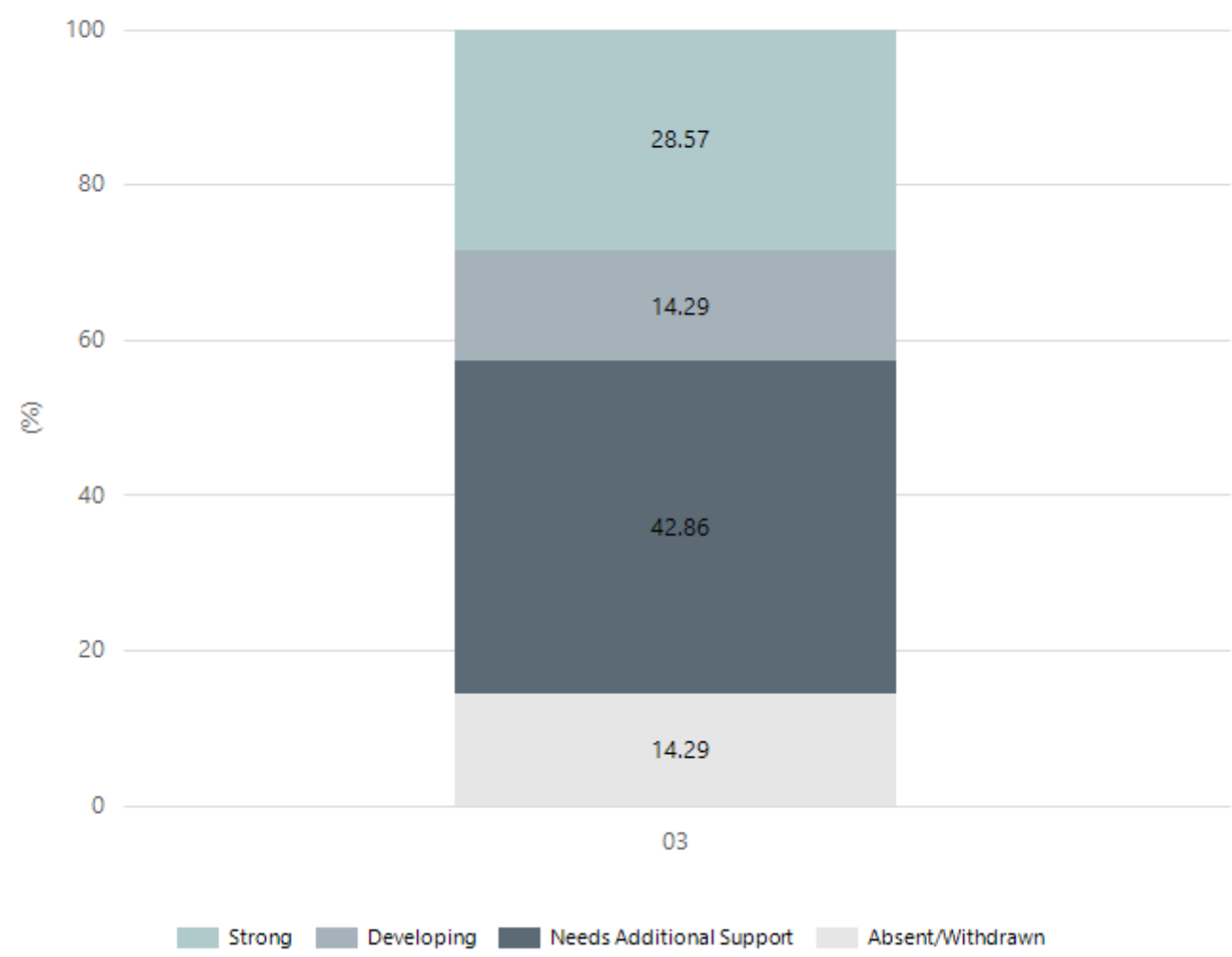
Writing



Year Level	03
Strong	4
Developing	1
Needs Additional Support	1
Absent/Withdrawn	1
Total	7

Data Source: Department for Education Assessment Data Holdings, 2024. If there are less than 6 students who sat NAPLAN in a school, no information will be shown. If a year level has less than 6 students, that year level will not be shown in NAPLAN results. Only data for Aboriginal learners is displayed.

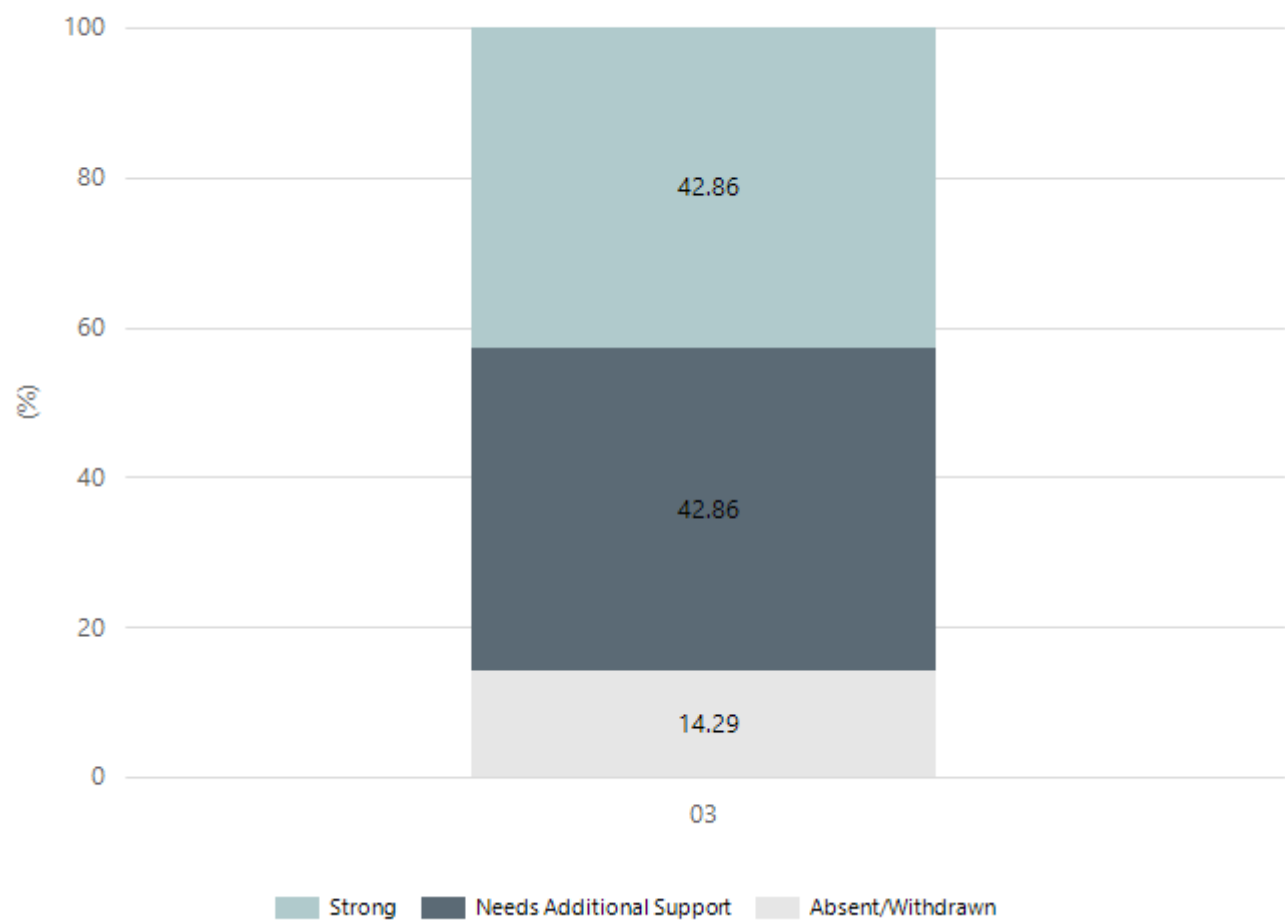
Grammar



Year Level	03
Strong	2
Developing	1
Needs Additional Support	3
Absent/Withdrawn	1
Total	7

Data Source: Department for Education Assessment Data Holdings, 2024. If there are less than 6 students who sat NAPLAN in a school, no information will be shown. If a year level has less than 6 students, that year level will not be shown in NAPLAN results. Only data for Aboriginal learners is displayed.

Spelling



Year Level	03
Strong	3
Needs Additional Support	3
Absent/Withdrawn	1
Total	7

Data Source: Department for Education Assessment Data Holdings, 2024. If there are less than 6 students who sat NAPLAN in a school, no information will be shown. If a year level has less than 6 students, that year level will not be shown in NAPLAN results. Only data for Aboriginal learners is displayed.

Preschool Attendance

	Term 1	Term 2	Term 3	Term 4
2021 centre	88%	88.3%	85.5%	89.5%
2022 centre	89.2%	66.2%	73.5%	78.4%
2023 centre	85.3%	80.3%	76.3%	79.6%
2024 centre	91.6%		82.6%	

Based on attendances recorded in the two-week reference period each term. Data for eligible enrolments as described in the department's Enrolment policy. Attendance rates may differ to previous reporting with the transfer from calculations based on deemed attendance to actual attendance using booked hours divided by attended hours. Data Source: Department for Education Attendance Data, Semester 1 Report 2024. A blank cell indicates there we no students enrolled.

School Attendance

Year Level	2022	2023	2024
Reception	86.2%	83.0%	90.6%
Year 01	85.9%	90.3%	84.7%
Year 02	82.6%	86.5%	90.5%
Year 03	87.6%	87.7%	90.2%
Year 04	81.1%	90.4%	90.0%
Year 05	81.6%	84.4%	89.5%
Year 06	84.0%	82.9%	86.0%
Primary Other	85.7%	88.3%	88.6%
Total	84.3%	86.4%	88.5%

Data Source: Department for Education Attendance Data, Semester 1 Report 2024. A blank cell indicates there we no students enrolled. 'Primary Other' includes students enrolled in specialised education options. 'Secondary Other' includes students who have already spent a year at Year 12 and elected to undertake further study at Year 12.

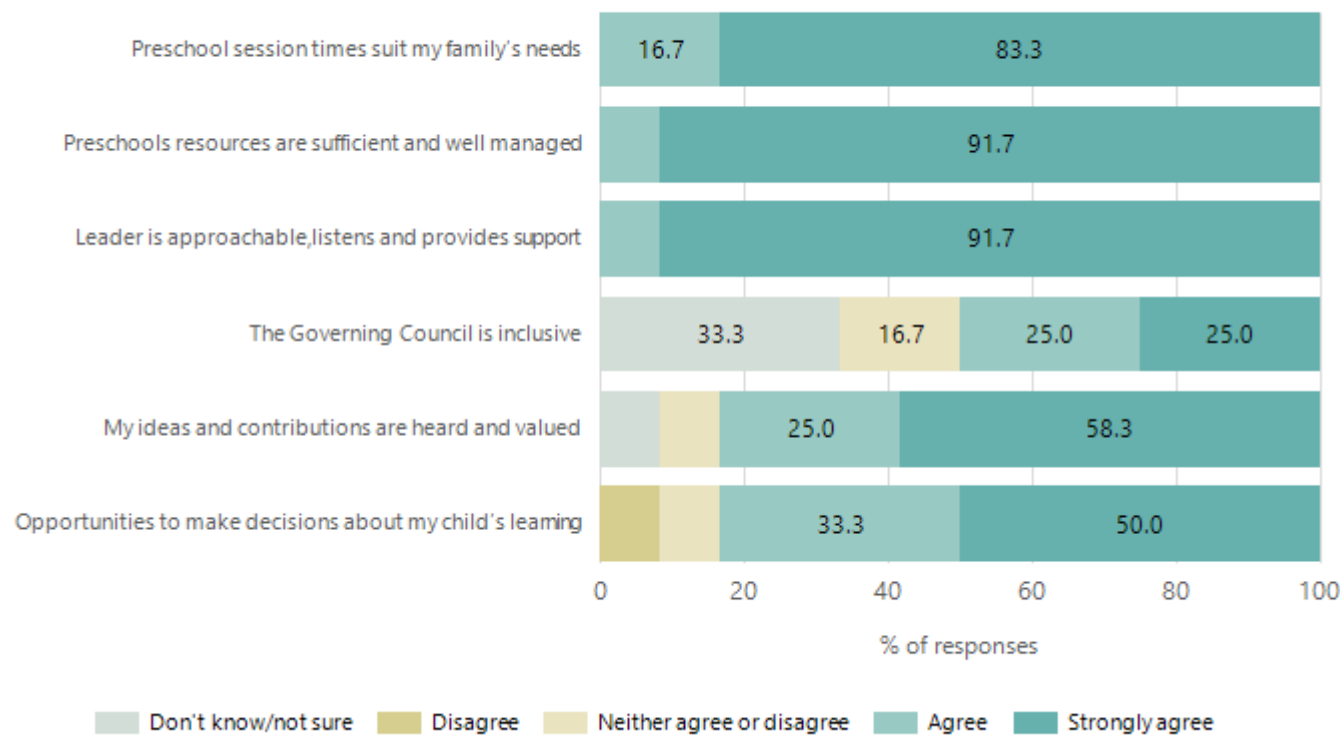
Attendance Comment

In South Australia, preschool attendance is not compulsory, but it is strongly encouraged. Preschool gives children the best opportunity to develop skills, which prepare them for school. These benefits include establishing positive routines and habits, friendships and connections as well as developing communication, problem-solving and creative skills. All children are entitled to access a preschool program over 4 terms the year before they start school.

In South Australia, all children and young people must be in school from 6 years to 16 years old. They must attend a government or non-government school full time. From age 16 to 17 however, young people must attend school or an approved learning program (such as an apprenticeship, traineeship, accredited course or university). Schools and parents must encourage and support students to come to school every day. Parents and caregivers must make sure their child is enrolled in a school, and attends school all day and everyday it is open, unless a child is sick or has an approved exemption. Teachers and leaders actively follow up when a student misses school, including recording all absences and non-attendance. All schools in South Australia have local attendance procedures governed under the Education and Children's Services Regulations 2020.

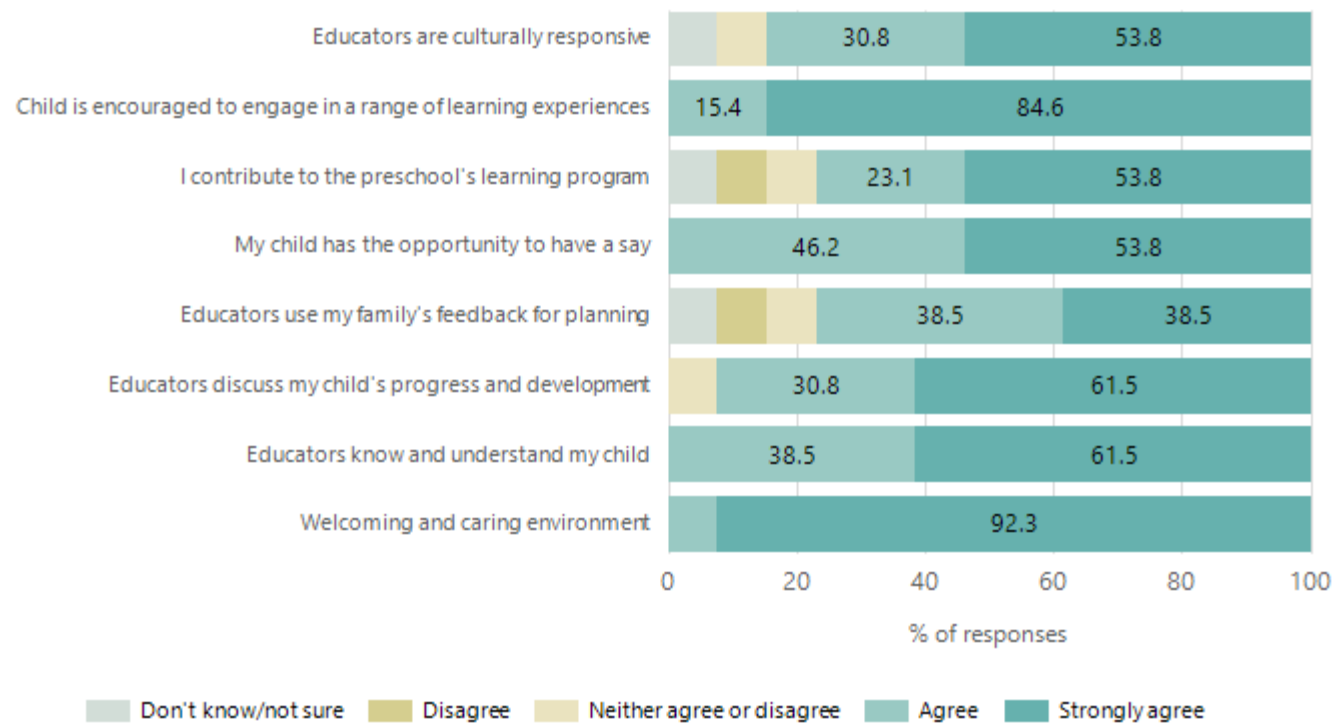
Preschool Family Opinion Survey

Governance, Leadership and Management



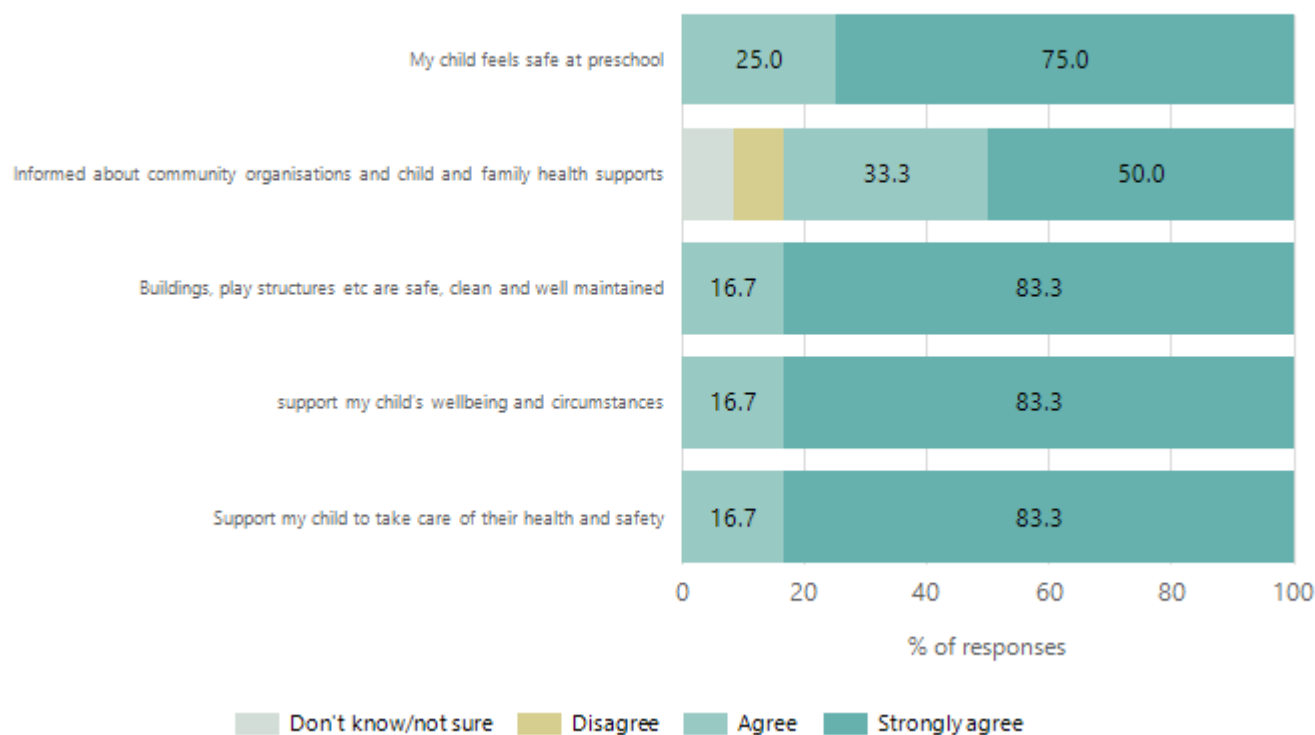
Data Source: 2024 Department for Education Preschool Family Opinions Survey, Term 3 2024.

Quality of Teaching and Learning



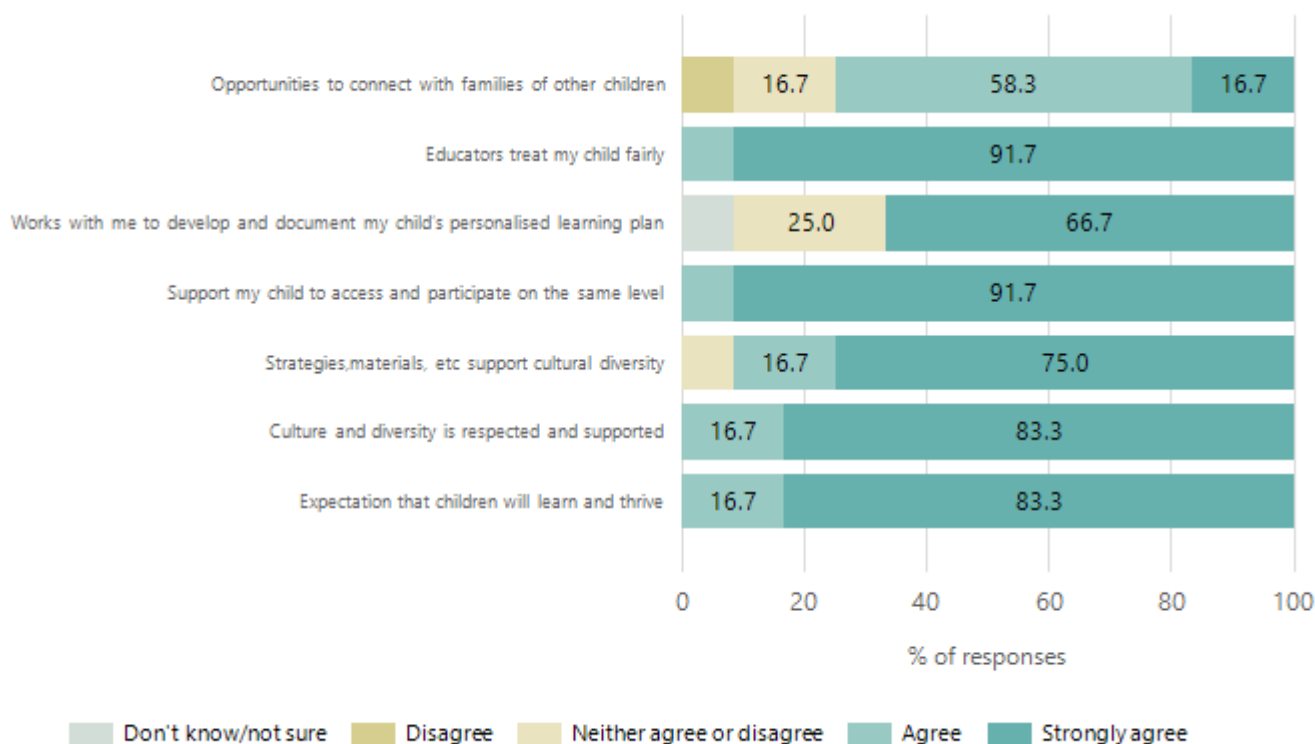
Data Source: 2024 Department for Education Preschool Family Opinions Survey, Term 3 2024.

Safety, Health and Wellbeing



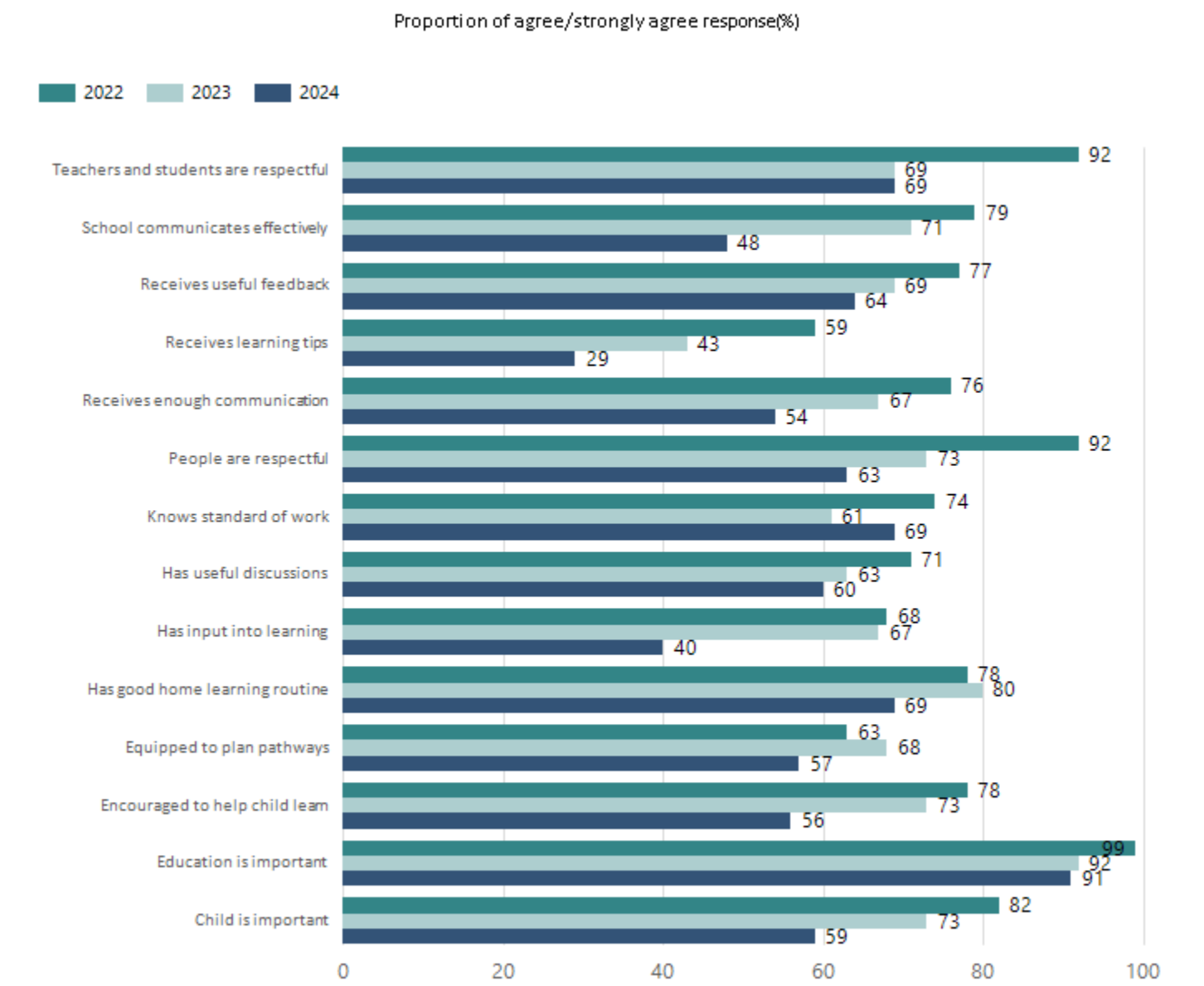
Data Source: 2024 Department for Education Preschool Family Opinions Survey, Term 3 2024.

Support and Inclusion



Data Source: 2024 Department for Education Preschool Family Opinions Survey, Term 3 2024.

School Parent Opinion Survey Results



Data Source: 2024 Department for Education Parent Opinions Survey, Term 3 2024.

Destination Schools

Feeder Schools (Site number - Name)	2022	2023	2024
0670 - Hendon Primary School	88.7%	66.7%	55.7%
0934 - Fulham Gardens Primary School		3.2%	
1246 - West Lakes Shore School		3.2%	6.6%
6015 - Saint Michael's College Junior School		3.2%	
9005 - Our Lady Queen of Peace School		4.8%	9.8%
9069 - Mount Carmel College - Primary Campus			3.3%
9999 - Unknown	8.1%	15.9%	16.4%

Note: The data is collected in term 3. It does not reflect actual schools enrolled in by existing preschool children. A blank cell indicates there was no data for students enrolled.

Data Source: Department for Education Destination Data Report, 2024.

Intended Destination

Leave Reason	Number	%
IS - INTERSTATE	8	35.0%
NG - ATTENDING NON-GOV SCHOOL IN SA	3	13.0%
OV - LEFT SA FOR OVERSEAS	2	9.0%
TG - TRANSFERRED TO SA GOVERNMENT SCHOOL	9	39.0%
U - UNKNOWN	1	4.0%

Data Source: Department for Education Destination Data Report, 2024. Data extract term 3 2024. Data shows recorded destinations for students that left the school in the previous year. Data is uploaded by schools in term 3 and may not reflect final or total figures at time of report creation.

Highest Qualifications held by the teaching workforce and workforce composition

All teachers at this school are qualified and registered with the SA Teachers Registration Board.

Qualification Level	Number of Qualifications
Bachelor's degrees or Diplomas	21
Postgraduate Qualifications	9

Data Source: Data extracted from Mandatory Workforce Information Collections as on the last pay date of June 2024. As self-reported by staff in the system.

Please note: Data includes staff who are Actively employed and on extended paid leave. Please note only the highest qualification of the Teaching staff is reported. Excludes any number of other certifications earned.

Workforce composition including indigenous staff

	Teaching Staff		Non-Teaching Staff	
	Indigenous	Non-Indigenous	Indigenous	Non-Indigenous
Full-Time Equivalents	1.0	26.0	1.7	18.5
Persons	1.0	29.0	2.0	28.0

Data Source: Data extracted from Mandatory Workforce Information Collection as on the last pay date of June 2024.

Please note: Data includes staff who are actively employed and on extended paid leave. "Indigenous category" is self-reported by staff in the system.

Financial Statement

Funding Source	Amount
Grants: State	\$5,253,897.96
Grants: Commonwealth	\$480.00
Parent Contributions	\$69,985.53
Fund Raising	\$12,071.06
Other	

Data Source: School supplied data.